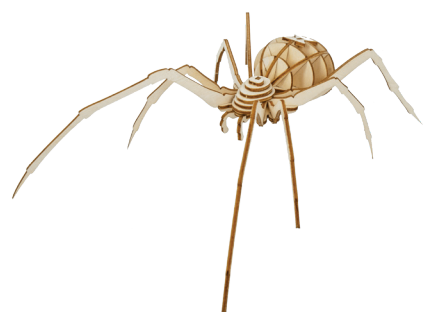


SPIDER

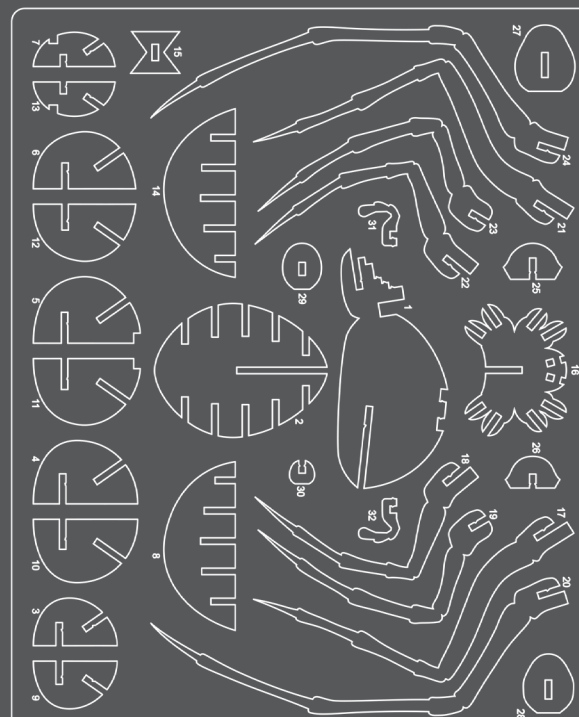
BUILDING INSTRUCTIONS



READ BEFORE ASSEMBLING:

- Go through the instructions one step at a time.
- Don't punch out all of the pre-cut parts at once.
- Plywood thickness and color may vary.
- While not necessary, glue may be applied if desired.
- Adult supervision recommended.

WARNING: CHOKING HAZARD - CONTAINS SMALL PARTS. NOT FOR CHILDREN UNDER 3 YRS.



Cover image: Sari O'Neal / shutterstock.com

Copyright © 2016 by Insight Editions, LP

Manufactured in Shaoguan, China 060116

MAKE IT YOUR OWN

TECHNIQUES

Use a small paintbrush to get into all of the nooks and crannies of the model.

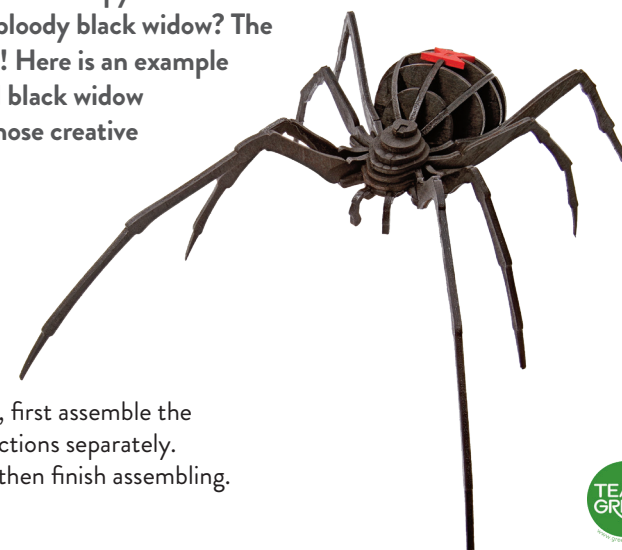
COLORS

A nice glossy black paint is fitting for the black widow. Add in the red hourglass shape for a pop of color.

ACCESSORIZE

To make the spider's eyes, use a nail-dotting tool or toothpick to paint two rows of four raised dots.

Before you start building and decorating your model, read through the instructions so you understand how it all comes together. Then make a plan—creepy or cartoonish? What about a bloody black widow? The choice is yours! Here is an example of a traditional black widow spider to get those creative juices flowing.



PLAN

For this project, first assemble the body and leg sections separately. Paint both and then finish assembling.



IncrediBuilds™, a division of Insight Editions LP
Copyright © 2016 by Insight Editions, LP

1



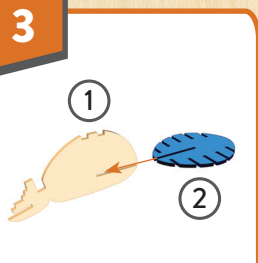
Match the board pieces to the numbers on the board image above to find your first two pieces.

2



Pop out only these puzzle pieces from the board.

3



To put the two pieces together, match up the slots on each piece. Slide together.

4



Continue assembling by putting pieces together in numerical order.

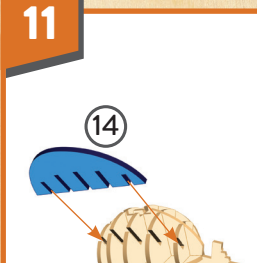
9



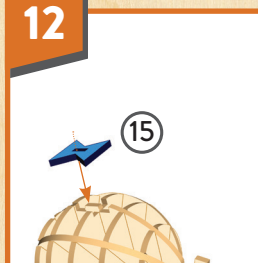
10



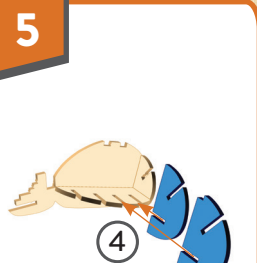
11



12



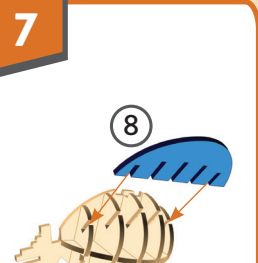
5



6



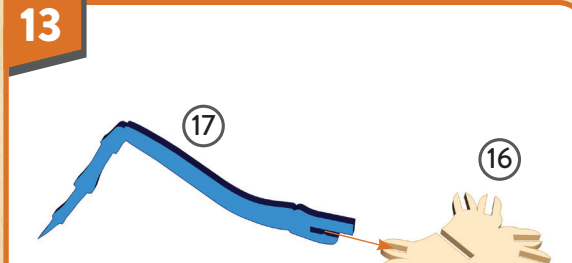
7



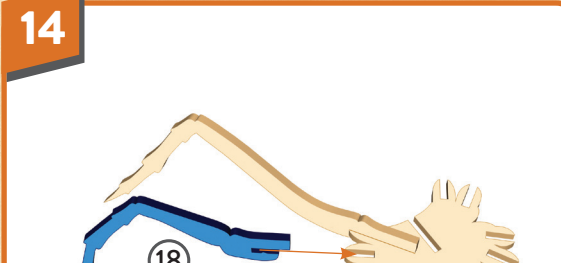
8



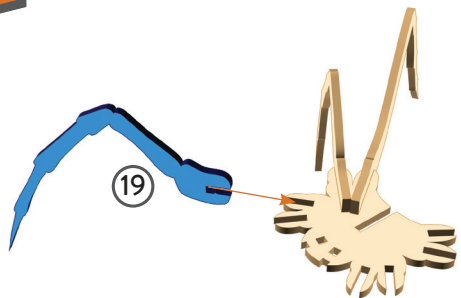
13



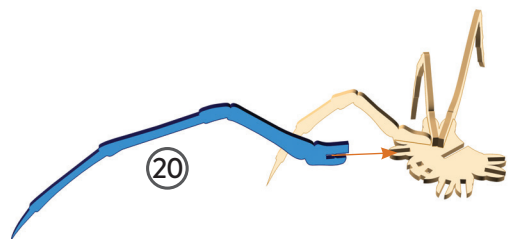
14



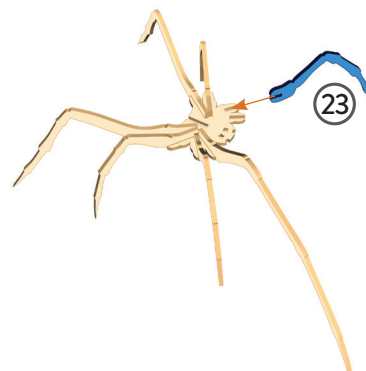
15



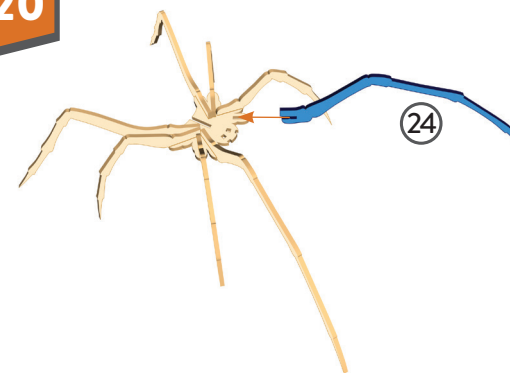
16



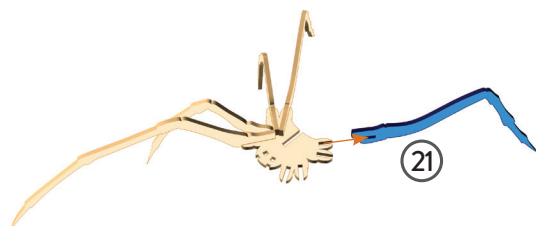
19



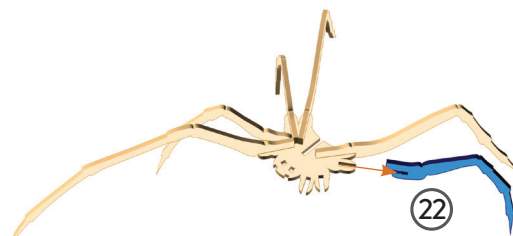
20



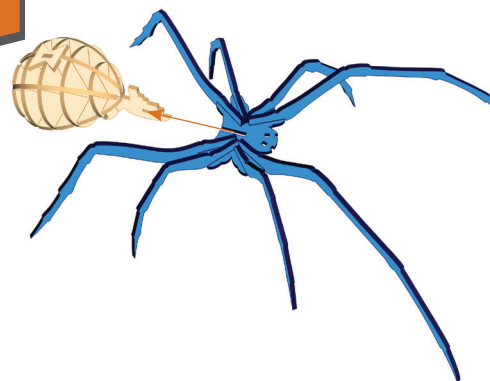
17



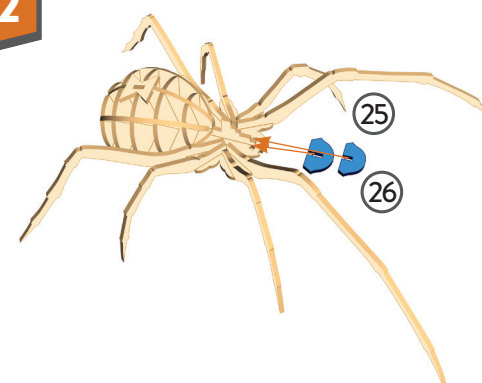
18



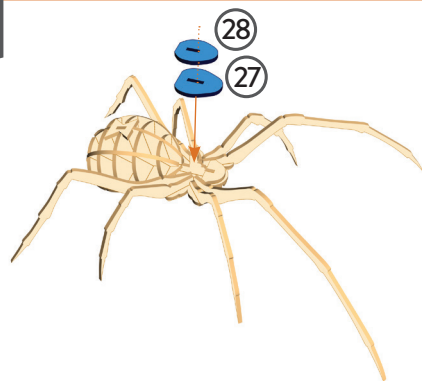
21



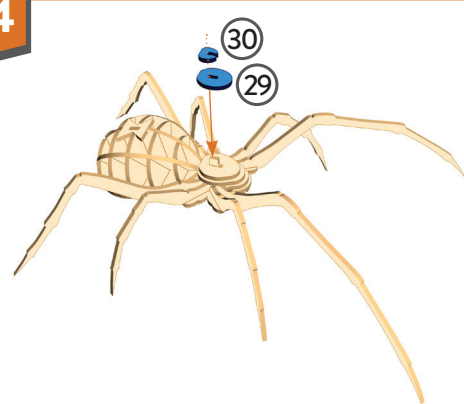
22



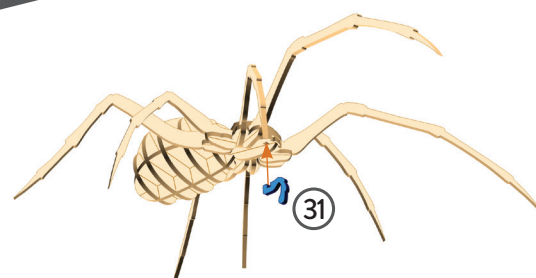
23



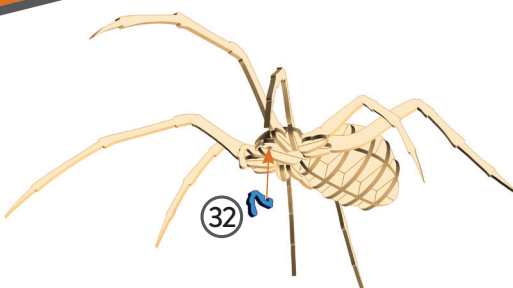
24



25



26



DID YOU KNOW?

DISTINCTIVE MARKINGS



Female black widows, especially Western and Southern varieties, typically have a red hourglass symbol on their undersides. But not all black widows have this characteristic. Northern black widow spiders don't usually have the full hourglass on the underside of their abdomens, but they have additional red markings on the top of their abdomens. Even further than that, there are a lot of variations among each spider's coloring. In drawings and other art projects, the hourglass can be seen on top of the abdomen. Just like on the model you are building, the hourglass makes it clear which type of spider it is. In real life, you would most likely find the symbol on the underside.