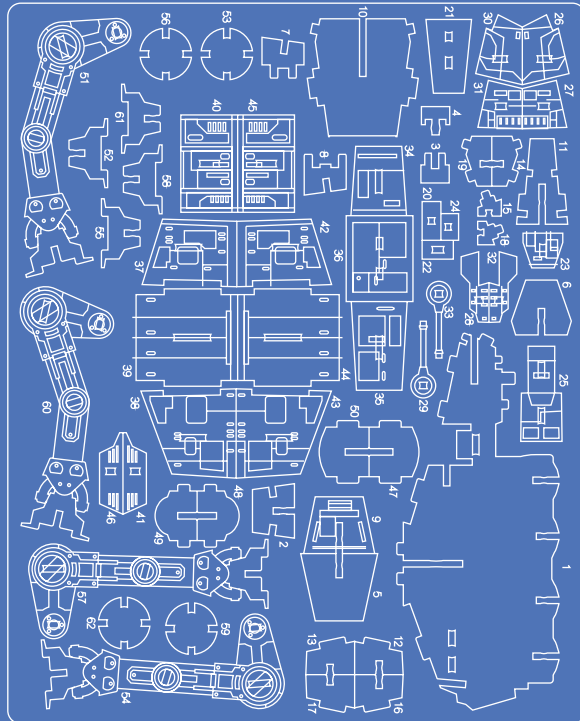
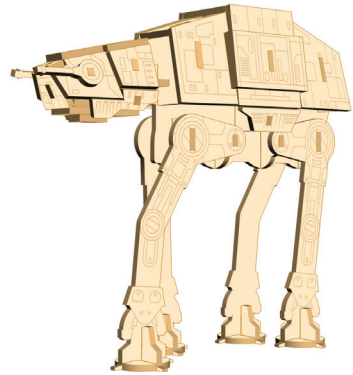


# AT-ACT BUILDING INSTRUCTIONS



Manufactured in Shaoguan, China 060116

## READ BEFORE ASSEMBLING:

- Go through the instructions one step at a time.
- Don't punch out all of the pre-cut parts at once.
- Plywood thickness and color may vary.
- While not necessary, glue may be applied if desired.
- If you have trouble punching out the small pieces from the board, use tweezers or a toothpick to help.
- Adult supervision recommended.

**WARNING: CHOKING HAZARD -**  
CONTAINS SMALL PARTS.  
NOT FOR CHILDREN UNDER 3 YRS.

INCREDIBLEBUILDS™ COPYRIGHT © INSIGHT EDITIONS, LP, 2017  
© & ™ 2017 LUCASFILM LTD.

1

Locate pieces 1 and 2 on the board.

2

Pop out only these puzzle pieces from the board.

3

To put the two pieces together, match up the slots on each piece. Slide together.

4

Continue assembling by putting pieces together in numerical order.

5

6

Pay attention to the orientation of your pieces.

7

8

9

10

11

12

13

14

15

16

17

18

19

20

21

22

23

24

The wider side of piece 24 should face the front of the AT-ACT.

Be careful placing piece 30. Make sure piece 25 is secure.



