

A-WING

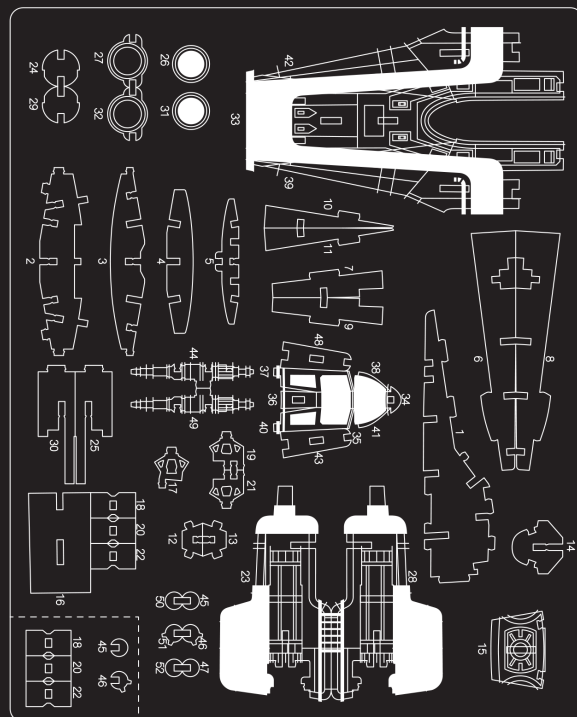
BUILDING INSTRUCTIONS



READ BEFORE ASSEMBLING:

- Go through the instructions one step at a time.
- Don't punch out all of the pre-cut parts at once.
- Plywood thickness and color may vary.
- While not necessary, glue may be applied if desired.
- If you have trouble punching out the small pieces from the board, use tweezers or a toothpick to help.
- Adult supervision recommended.

WARNING: CHOKING HAZARD -
CONTAINS SMALL PARTS.
NOT FOR CHILDREN UNDER 3 YRS.



Disney **STAR WARS**
© & ™ 2017 LUCASFILM LTD. USED UNDER AUTHORIZATION.

Manufactured in Shaoguan, China 09072017

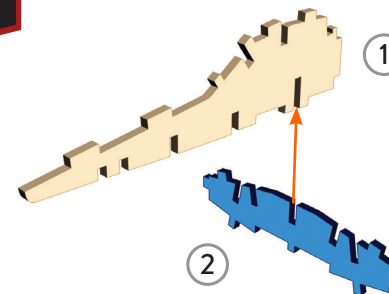
1

Find pieces 1 and 2 on the board.

2

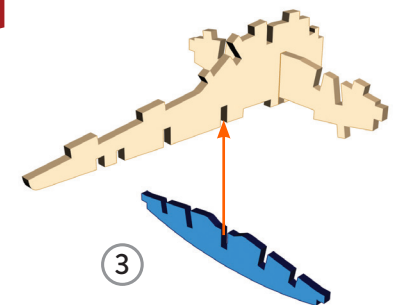
Pop out only these puzzle pieces from the board.

3



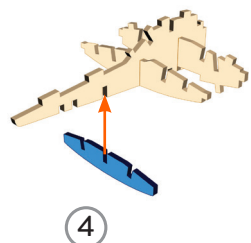
To put the two pieces together, match up the slots on each piece. Slide together.

4

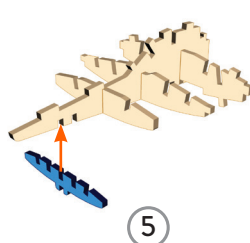


Continue assembling by putting pieces together in numerical order.

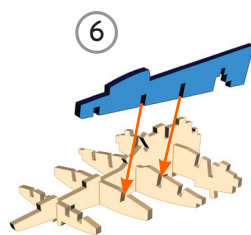
5



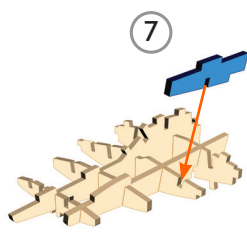
6



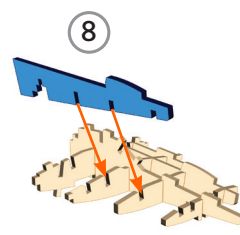
7



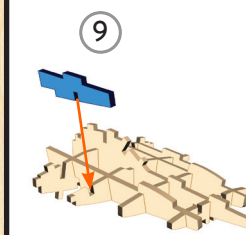
8



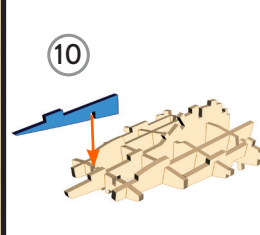
9



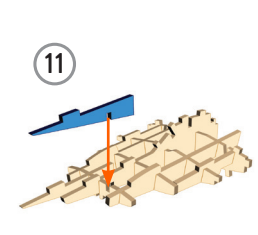
10



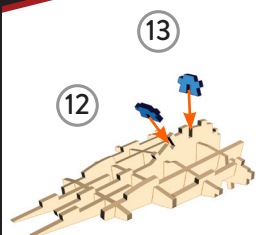
11



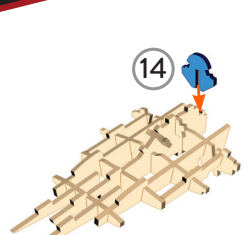
12



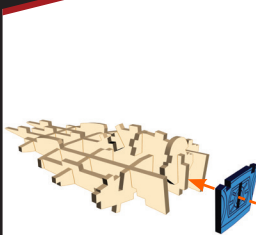
13



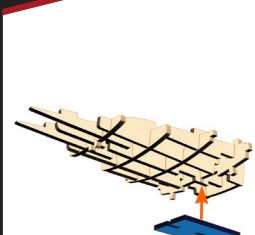
14



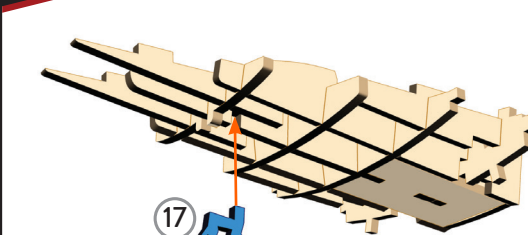
15



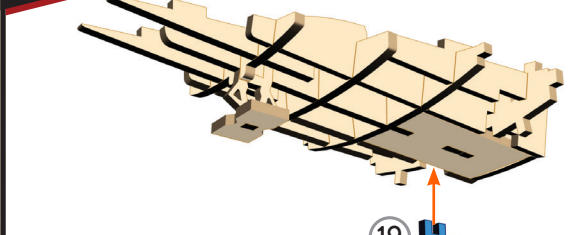
16



17



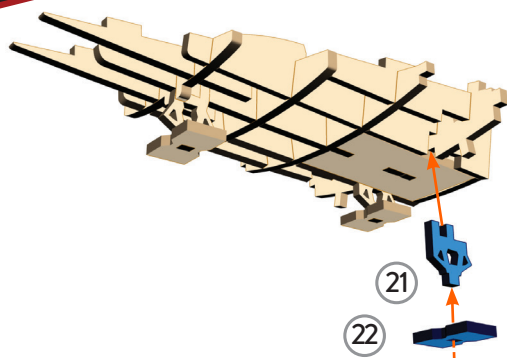
18



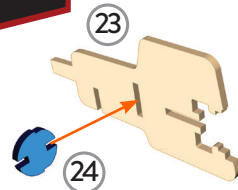
19

20

19

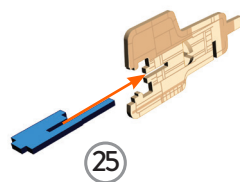


20

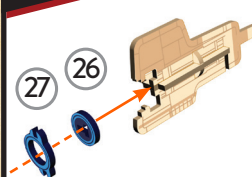


Pay careful attention to the orientation of piece 24. The smaller half of the piece should be inserted into the slot on piece 23.

21

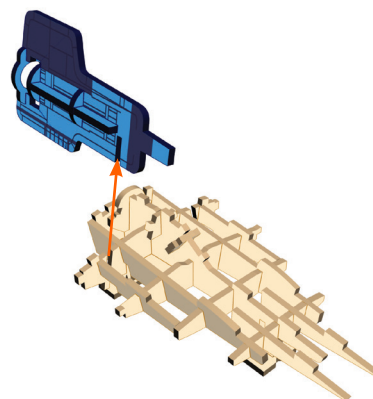


22

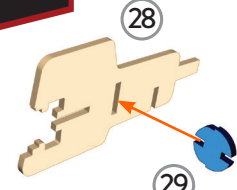


The circle of piece 27 should line up with piece 26.

23

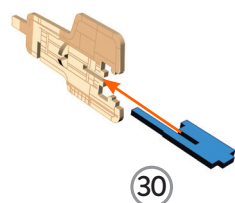


24

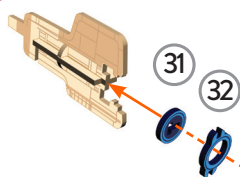


Pay careful attention to the orientation of piece 29. The smaller half of the piece should be inserted into the slot on piece 28.

25

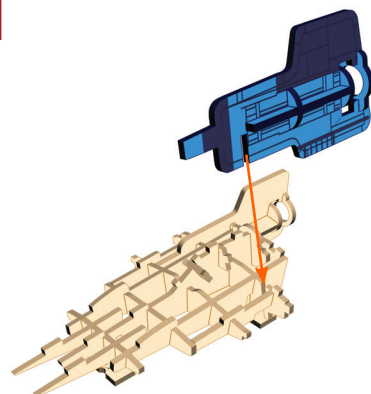


26

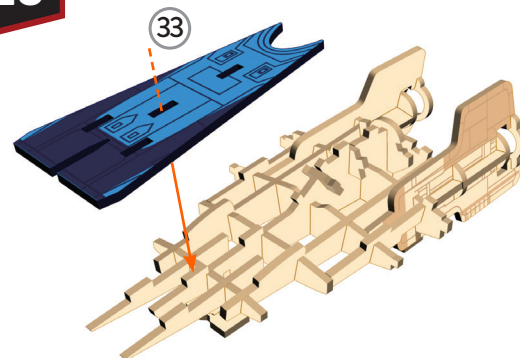


The circle of piece 32 should line up with piece 31.

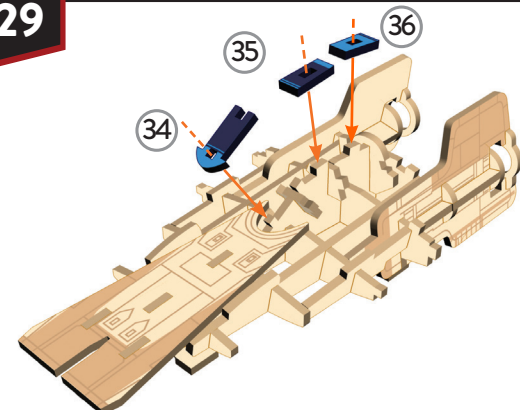
27



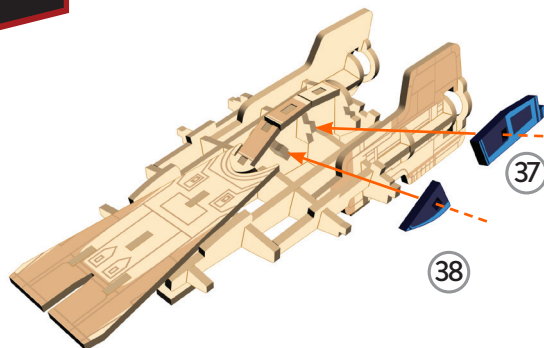
28



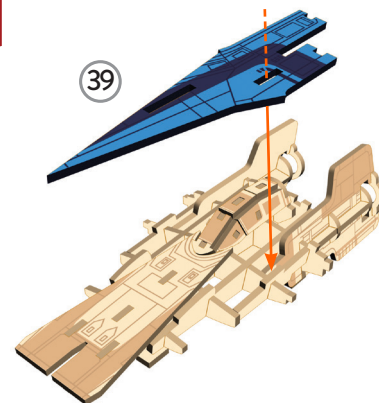
29



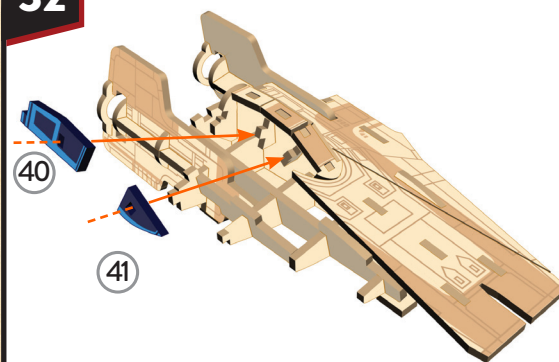
30



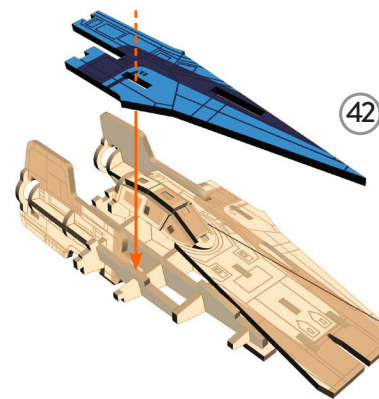
31



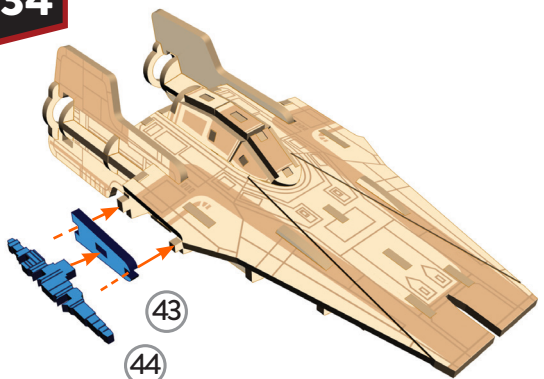
32



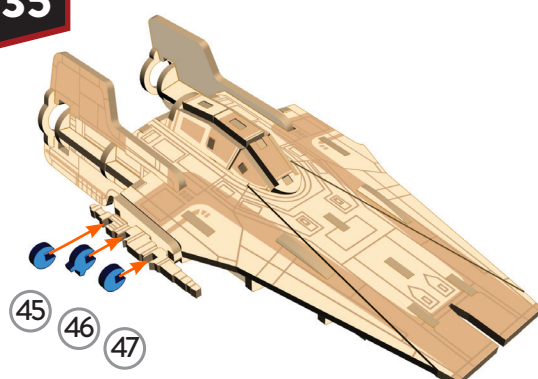
33



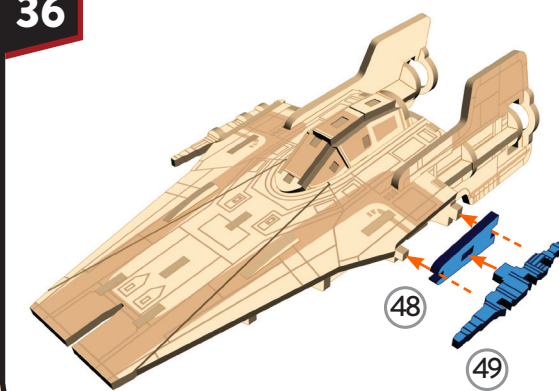
34



35



36



37

