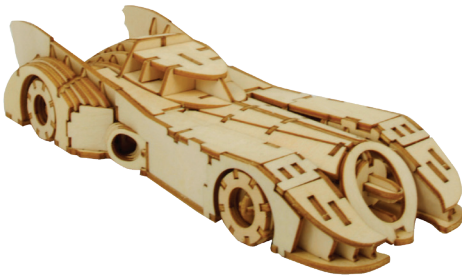




# BATMOBILE

## BUILDING INSTRUCTIONS



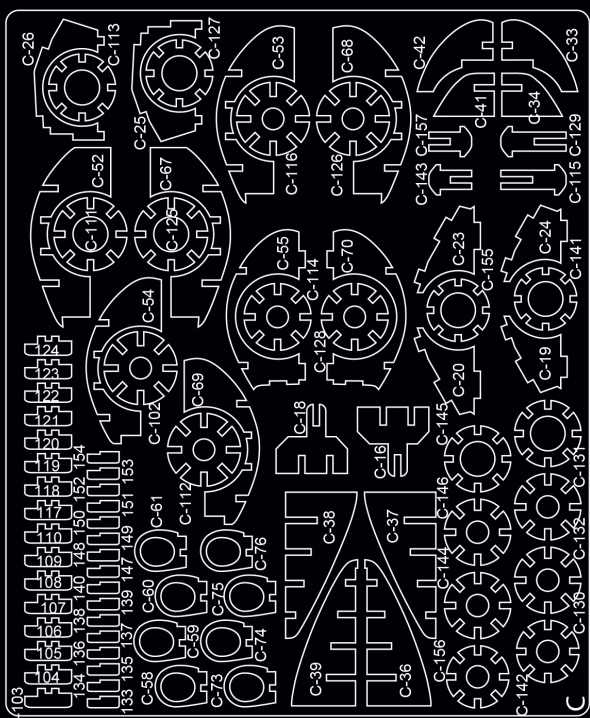
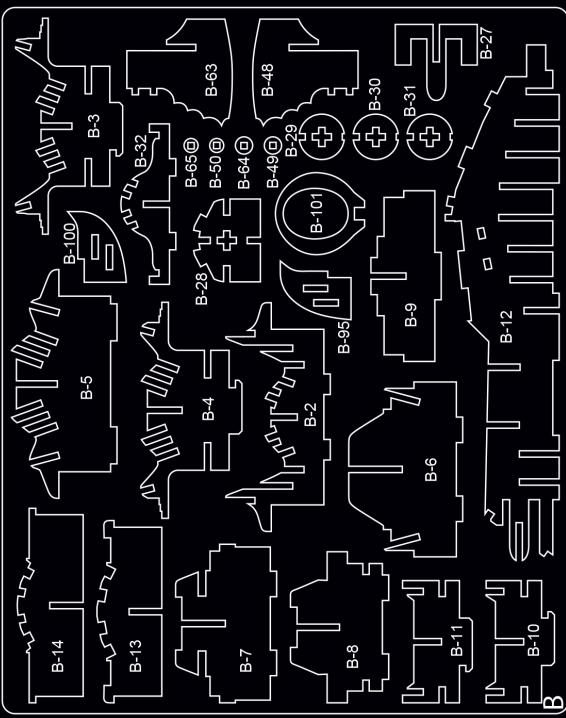
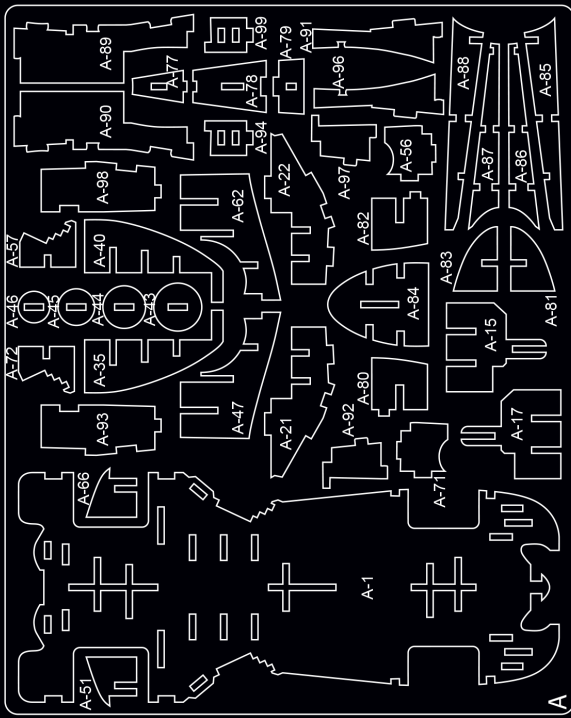
### READ BEFORE ASSEMBLING:

- Go through the instructions one step at a time.
- Don't punch out all of the pre-cut parts at once.
- Plywood thickness and color may vary.
- While not necessary, glue may be applied if desired.
- If you have trouble punching out the small pieces from the board, use tweezers or a toothpick to help.
- Adult supervision recommended.

WARNING: CHOKING HAZARD -  
CONTAINS SMALL PARTS.  
NOT FOR CHILDREN UNDER 3 YRS.



COPYRIGHT © 2016 DC COMICS.  
BATMAN AND ALL RELATED CHARACTERS AND ELEMENTS ARE © AND TM DC COMICS.  
DC LOGO, TM & © DC COMICS.  
WB SHIELD, TM & © WB. (16)



Manufactured in Shaoguan, China 060116

1

Each board is labeled A, B, or C, to indicate where to find each piece. Match the board pieces to the numbers on the instructions to find your first two pieces.

2

Pop out only these puzzle pieces from the board.

3

To put the two pieces together, match up the slots on each piece. Slide together.

4

Continue assembling by putting pieces together in numerical order.

5

6

7

8

9

10

11

12

13

14

Push pieces A-15 and A-17 all the way in, but be careful not to break the prongs.

15

Pieces C-16 and C-18 do not need to be pushed all the way in.

16

17

18

19

20

21

22

23

24

25

26

27

Note that the bigger notch should be on the top of pieces 29-31.

28

Turn the model around so you're facing the back end of the Batmobile.

29

30

31

32

33

34

35

Note that piece A-47 attaches at an angle. Press into place carefully.

36

37

38

39

40

41

42

43

44

45

46

47



48

Note that piece A-62 attaches at an angle. Press into place carefully.

49

B-64

50

B-65

51

A-66

52

C-67

53

C-68

54

C-69

55

C-70

56

A-71

57

A-72

58

C-73

59

C-74

60

C-76 C-75

61

A-77 A-78 A-79

62

A-80

63

A-81

64

A-82

65

A-83

66

A-84

67

A-85 A-86

68

A-87 A-88

69

A-89

70

A-90

71

A-91

72

A-92 A-93

73

A-94 B-95

74

A-96

75

A-97 A-98

76

A-99 B-100

77

B-101

78

C-102

Make sure that the thinner side of piece C-103 faces to the front of the wheel. Pay attention to this in steps 79 and 85 also.

C-103

79

C-104 C-105 C-106 C-107 C-108 C-109 C-110

80

C-112

81

C-113

82

C-114

Turn the wheel around so you see the back. Note that the hole on the back is smaller than the front.

83

C-115

84

C-116

85

C-117 C-118 C-119 C-120 C-121 C-122 C-123 C-124

86

C-125

Remember that the hole on the back of the wheel is smaller than the front.

87

C-126

88

C-127

89

C-128

90

C-129

91

C-130 C-131 C-132

Hold these three pieces together as you proceed to the next step.

92

C-133

Piece C-133 should be centered, so the ends hang over both the front and back of the wheel.

93

C-134 C-135 C-136 C-137 C-138 C-139 C-140

94

C-141

Remember the front of the wheel has a larger hole than the back.

95

C-142

96

C-143

97

C-144

98

C-145

Refer to notes on steps 91 and 92.

99

C-146 C-147 C-148 C-149 C-150 C-151 C-152 C-153 C-154

100

C-155

101

C-156

102

C-157

103

C-158