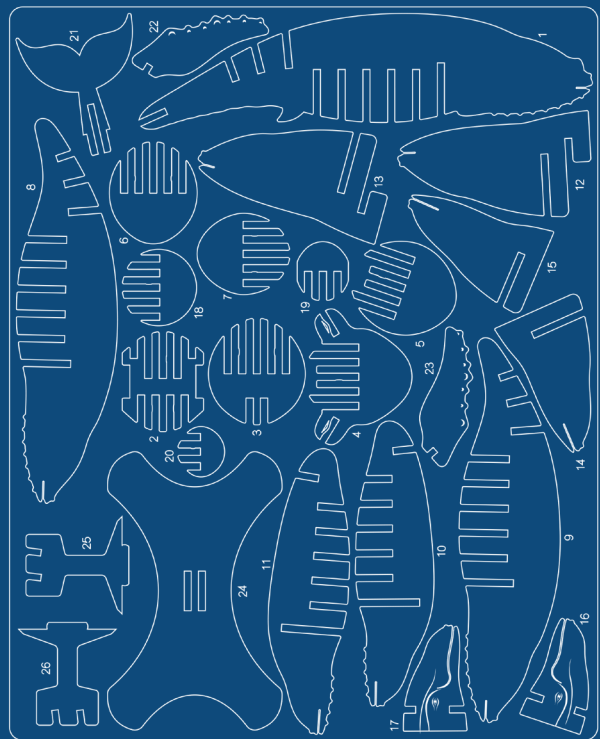
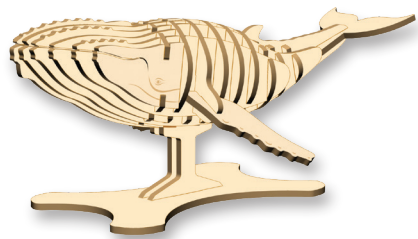


HUMPBACK WHALE

BUILDING INSTRUCTIONS



Manufactured in Shaoguan, China 49072017

READ BEFORE ASSEMBLING:

- Go through the instructions one step at a time.
- Don't punch out all of the pre-cut parts at once.
- Plywood thickness and color may vary.
- While not necessary, glue may be applied if desired.
- If you have trouble punching out the small pieces from the board, use tweezers or a toothpick to help.
- Adult supervision recommended.

WARNING: CHOKING HAZARD -
CONTAINS SMALL PARTS.
NOT FOR CHILDREN UNDER 3 YRS.

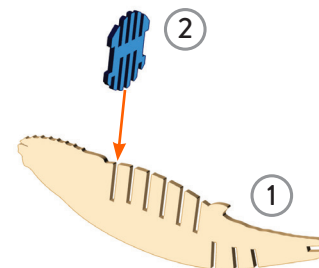
1

Find pieces 1 and 2 on the board.

2

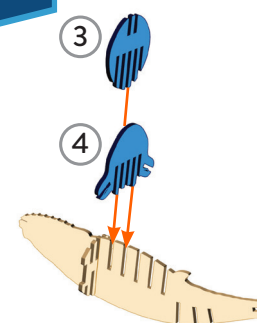
Pop out only these puzzle pieces from the board.

3



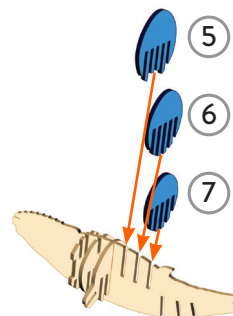
To put the two pieces together, match up the slots on each piece. Slide together.

4

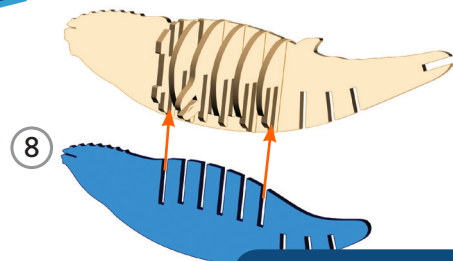


Continue assembling by putting pieces together in numerical order.

5

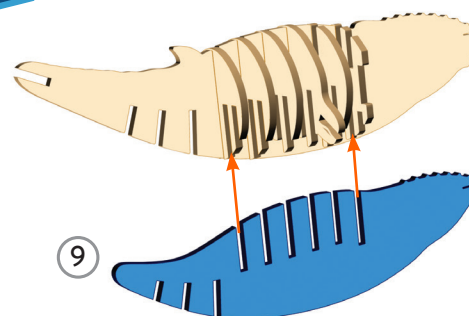


6

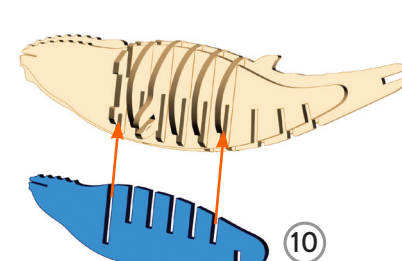


Make sure to insert piece 8 into the slots closest to piece 1.

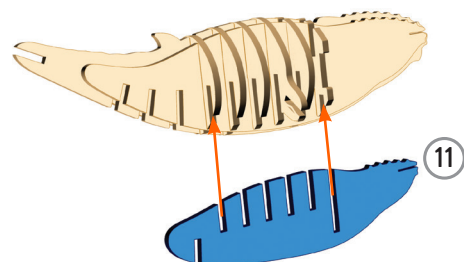
7



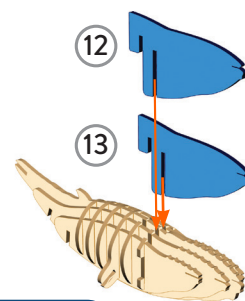
8



9

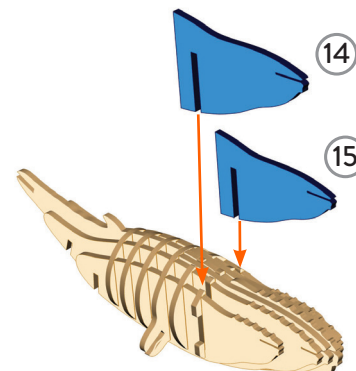


10

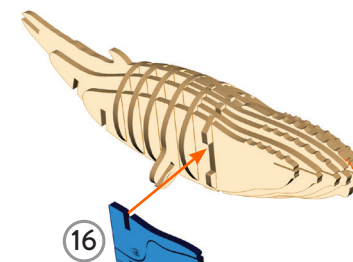


Pieces 12 and 13 fit into the middle slots of the whale.

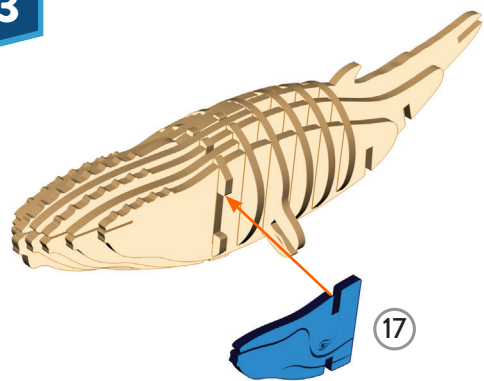
11



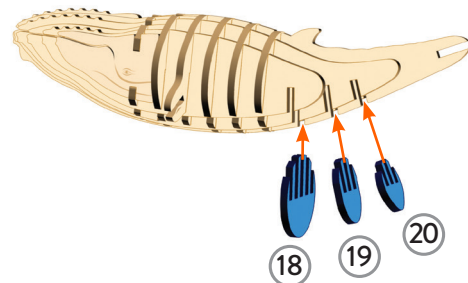
12



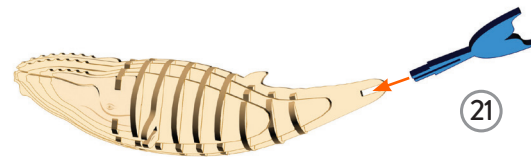
13



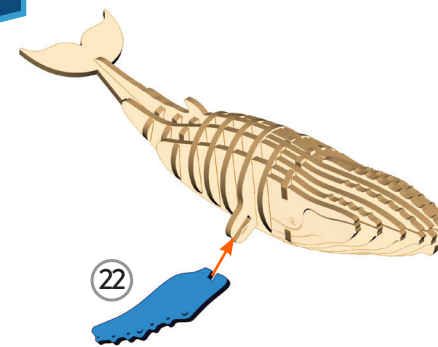
14



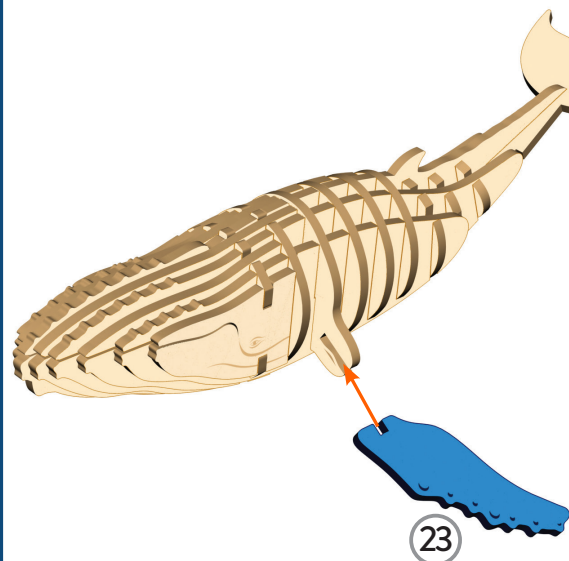
15



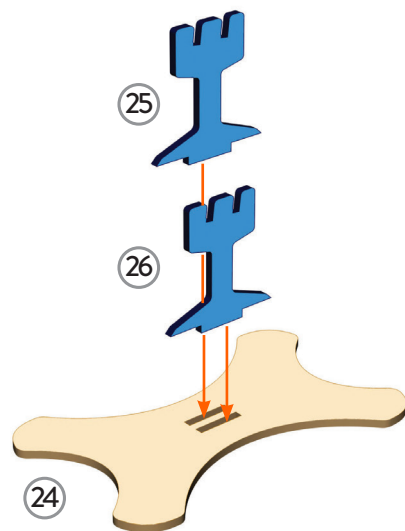
16



17

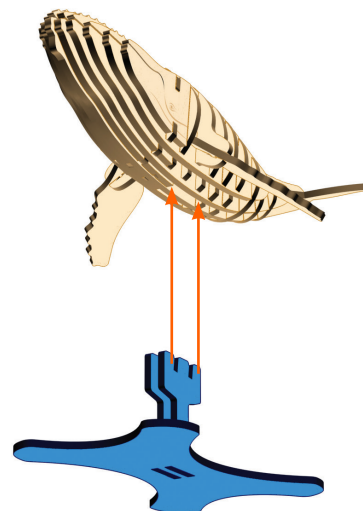


18



The slots on the tops of pieces 25 and 26 should be slanted slightly to the right.

19



Insert the stand on the bottom of the whale, just behind the head.

