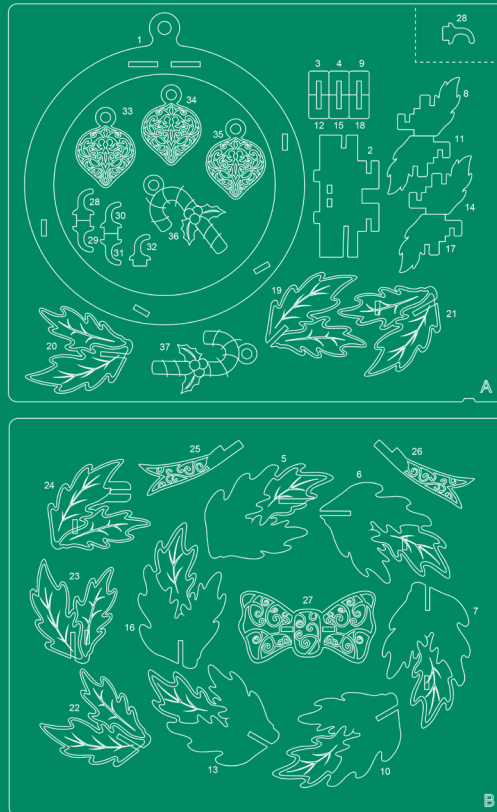


# WREATH

## BUILDING INSTRUCTIONS



Manufactured in Shaoguan, China Lot # TK

### READ BEFORE ASSEMBLING:

- Go through the instructions one step at a time.
- Don't punch out all of the pre-cut parts at once.
- Plywood thickness and color may vary.
- While not necessary, glue may be applied if desired.
- If you have trouble punching out the small pieces from the board, use tweezers or a toothpick to help.
- Adult supervision recommended.

**WARNING: CHOKING HAZARD - CONTAINS SMALL PARTS. NOT FOR CHILDREN UNDER 3 YRS**

INCREDIBUILDS™ COPYRIGHT © INSIGHT EDITIONS, LP, 2017.

# MAKE IT YOUR OWN

Before you start building and decorating your model, make a plan. Do you want to make a replica of the project below or create something of your own design? Anything goes!

### PLAN

For this project, you will want to paint each piece separately before assembling. Study the photo of the painted model carefully.

### TECHNIQUES

Use a fine paintbrush and take your time, especially for the smaller engraved details. Paint each piece, let dry, and then assemble.



### COLORS

Use different shades of green to add depth with shading for each of the leaves and back of the wreath. Use shades of red, white, gray, and yellow for the ornaments, candy canes, and bow. Remember you can always add white to a color to make it lighter or black to make it darker.



1



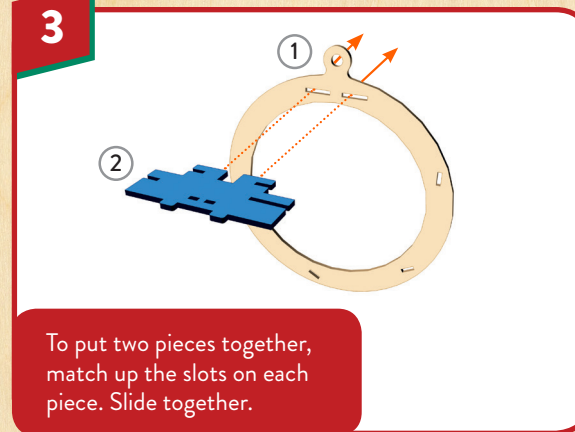
Find pieces 1 and 2 on the board.

2



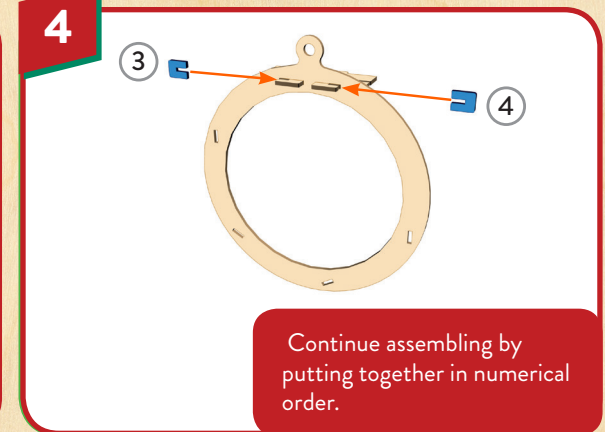
Pop out only these puzzle pieces from the board.

3



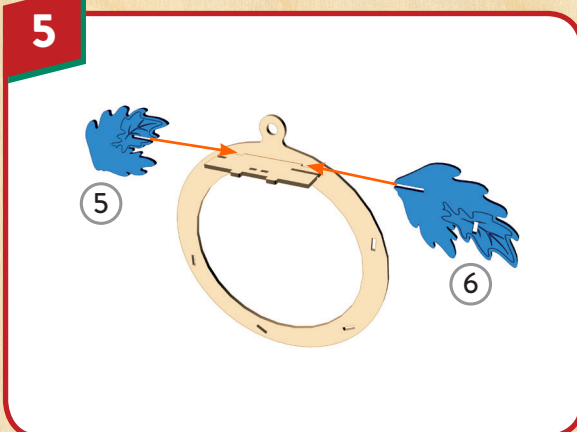
To put two pieces together, match up the slots on each piece. Slide together.

4

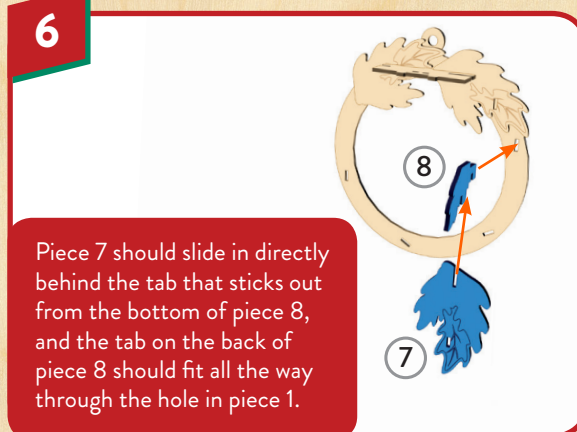


Continue assembling by putting together in numerical order.

5

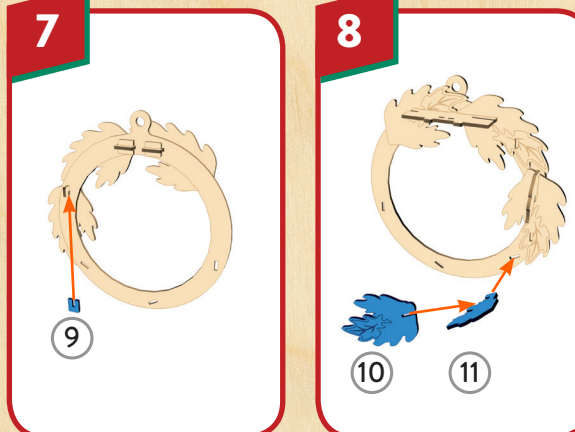


6

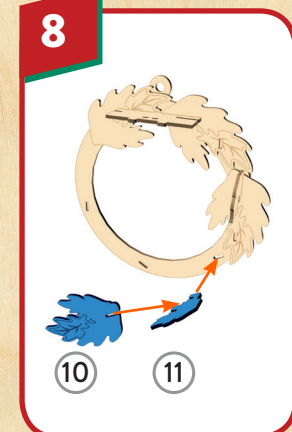


Piece 7 should slide in directly behind the tab that sticks out from the bottom of piece 8, and the tab on the back of piece 8 should fit all the way through the hole in piece 1.

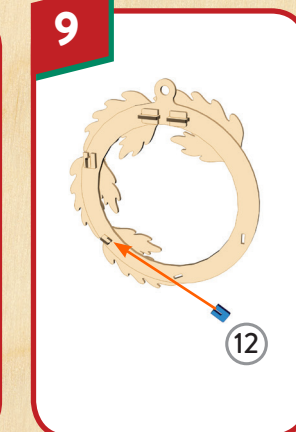
7



8



9



10

