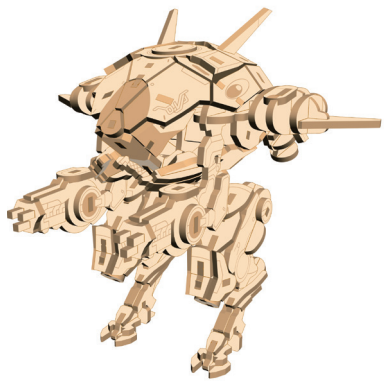


D.VA'S MEKA

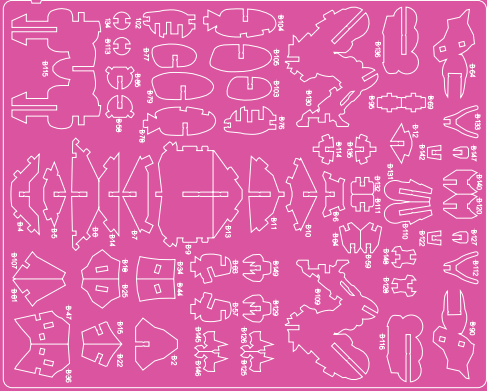
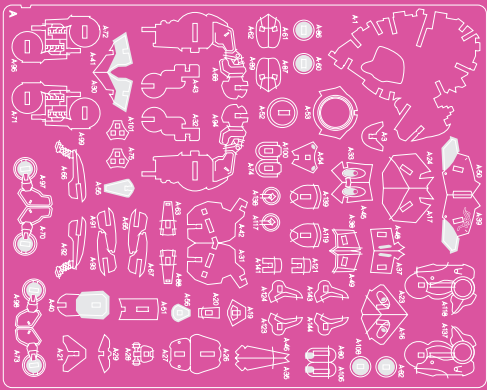
BUILDING INSTRUCTIONS



READ BEFORE ASSEMBLING:

- Go through the instructions one step at a time.
- Don't punch out all of the precut parts at once.
- Plywood thickness and color may vary.
- While not necessary, glue may be applied if desired.
- If you have trouble punching out the small pieces from the board, use tweezers or a toothpick to help.
- Adult supervision recommended.

WARNING: CHOKING HAZARD - CONTAINS SMALL PARTS. NOT FOR CHILDREN UNDER 3 YRS.



Manufactured in Shaoguan, China 1402018

© 2018 BLIZZARD ENTERTAINMENT, INC. ALL RIGHTS RESERVED. OVERWATCH AND BLIZZARD ENTERTAINMENT ARE TRADEMARKS OR REGISTERED TRADEMARKS OF BLIZZARD ENTERTAINMENT, INC. IN THE U.S. AND/OR OTHER COUNTRIES.

MAKE IT YOUR OWN

Before you start building and decorating your model, make a plan. Do you want to make an exact replica of the project below or create something of your own design? Anything goes!

PLAN

For this project, you will want to fully assemble the model before beginning to craft. Then study the picture shown very carefully.

TECHNIQUE

Use a fine paintbrush and take your time, especially for the small details.



PROCESS

Start by grabbing some light pink paint and coloring in the armored shell of the mech. Then, using a slightly darker pink, paint the bottom of the feet, arm joints, and D.Va's decal on top of the model. Taking some creamy white paint, fill in the accents on the model like the wings, antenna tips, boosters, and ankles of the mech. For the metallic parts of this model, use silver for the surface details and a dark gray or pewter color for larger areas like the guns, underneath the legs, etc. Paint the front canopy a dark blue-gray and add a few white streaks as highlights. Finally, add the finishing touch to your model by painting the four lights on the front and back of the model a turquoise blue.



1

Find pieces 1 and 2 on the board.

2

Pop out only these puzzle pieces from the board.

3

To put the two pieces together, match up the slots on each piece. Slide together.

4

Continue assembling by putting pieces together in numerical order.

5

6

7

8

9

10

11

12

13

14

15

16

17

18

19

20

21

22

23

24

25

26

27

28

29

30

31

32

33

34

35

36

37

38

39

40

41

42

