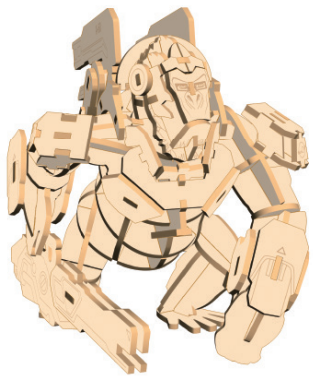


# WINSTON

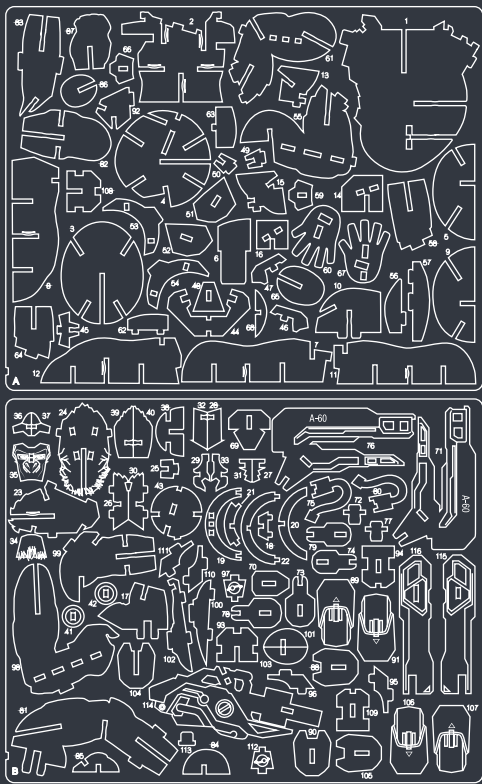
## BUILDING INSTRUCTIONS



### READ BEFORE ASSEMBLING:

- Go through the instructions one step at a time.
- Don't punch out all of the precut parts at once.
- Plywood thickness and color may vary.
- While not necessary, glue may be applied if desired.
- If you have trouble punching out the small pieces from the board, use tweezers or a toothpick to help.
- Adult supervision recommended.

**WARNING: CHOKING HAZARD - CONTAINS SMALL PARTS. NOT FOR CHILDREN UNDER 3 YRS.**



© 2018 BLIZZARD ENTERTAINMENT, INC. ALL RIGHTS RESERVED. OVERWATCH AND BLIZZARD ENTERTAINMENT ARE TRADEMARKS OR REGISTERED TRADEMARKS OF BLIZZARD ENTERTAINMENT, INC. IN THE U.S. AND/OR OTHER COUNTRIES.

Incredibuilds™ Copyright © Insight Editions, LP, 2018

# MAKE IT YOUR OWN

Before you start building and decorating your model, make a plan. Do you want to make an exact replica of the project below or create something of your own design? Anything goes!

### PLAN

For this project, it's easier to paint Winston partially disassembled. Separate his arms, legs, head, tesla cannon, and the energy packs on his back. Just be careful to not paint too heavily around any slots or tabs so that the pieces still fit together easily.

### TECHNIQUE

Study the image provided, as well as other reference images, very carefully. Use a fine paintbrush and take your time, especially for the small details.



### COLOR

Start by painting the largest section on the model with simple base coat colors—off-white for the armor and weapons, dark gray for the base suit, and a light olive green color for Winston's clothes under his armor. Use a bright orange for his helmet. Paint Winston's face gray, and then use a faded white for the lighter details. Use darker gray to add shadows and hair around the edges of his face. A fine black pen can be used for his glasses, but a small brush with black paint works, too. For details like the little triangles, Lunar Ops logos, and the letters or numbers that are laser engraved, you can use watered-down paint. Use a small brush and let the paint settle into the grooves. Then wipe away any excess paint, leaving the deeper grooves filled in with color. Finally, finish off your model by painting the accents on the suit and tesla cannon with a bright yellow.

1

Find pieces 1 and 2 on the board.

2

Pop out only these puzzle pieces from the board.

3

To put the two pieces together, match up the slots on each piece. Slide together.

4

Continue assembling by putting pieces together in numerical order.

5

6

7

8

9

10

11

12

Push piece 10 all the way in so that the notch on the left edge of the piece rests inside the slot on piece 1.

13

14

15

16

17

18

Connect the notches of piece 17 to both slots on piece 16.

19

20

21

22

23

24

If you have trouble with this step, attach the ends of piece 22 to piece 19 first, then angle it back so it connects to piece 21.

25

26

27

28

29

30

Attach piece 28 to piece 27 on the notch furthest to the right. The front edges of pieces 28 and 26 should be touching.

Attach piece 29 so it's flush with piece 28.

31

32

33

34

35

36

Attach piece 32 to piece 31 on the notch furthest to the left. The front edges of pieces 32 and 30 should be touching.

Attach piece 33 so it's flush with piece 32.

37

38

39

40

41

42



**43**

B-43

Pay careful attention to the orientation of piece 43. The tab should stick out on the left side of Winston's face.

**44**

**45**

A-44

**46**

A-45

**47**

A-46 A-47

Attach the notches on pieces 46 and 47 to the ends of piece 44. Angle pieces 46 and 47 inward so they slant toward Winston's face.

**48**

A-48

**49**

A-49 A-50

**50**

A-51 A-52

**51**

A-53

**52**

A-54

**53**

A-55 A-56 A-57

**54**

A-58

**55**

A-59

**56**

A-60

Make sure the thumb is on the far side of piece 60. If you have trouble attaching piece 60, try flipping piece 58.

**57**

**58**

A-61 A-62 A-63

**59**

A-64

**60**

A-65

**61**

A-66

**62**

A-67

**63**

**64**

A-68

**65**

B-70 B-69

**66**

B-71 B-72 B-73 B-74

**67**

B-75

**68**

**69**

B-76 B-77 B-78 B-79

**70**

A-60 B-80

**71**

**72**

A-82 B-81

**73**

A-83

**74**

B-84

**75**

B-85

**76**

A-86

**77**

A-87

**78**

B-88

**79**

B-89

**80**

B-90

**81**

B-91

**82**

A-92 B-93

**83**

B-94

**84**

B-95

**85**

B-96

**86**

B-97

**87**

**88**

Connect the ends on piece 81 to both slots on piece 14.

**89**

B-99 B-98

**90**

B-100

**91**

B-101

**92**

B-102

**93**

B-103

**94**

B-104

Slide piece 104 all the way into the elbow. Then push the front down so that the piece is parallel with pieces 102 and 100.

**95**

B-105

**96**

B-106

**97**

B-107

**98**

A-108

**99**

B-109

**100**

B-110

**101**

B-111

**102**

B-112

**103**

**104**

B-113 B-114

**105**

B-116

**106**

Connect the smallest slot on piece 114 to the very end of piece 102.