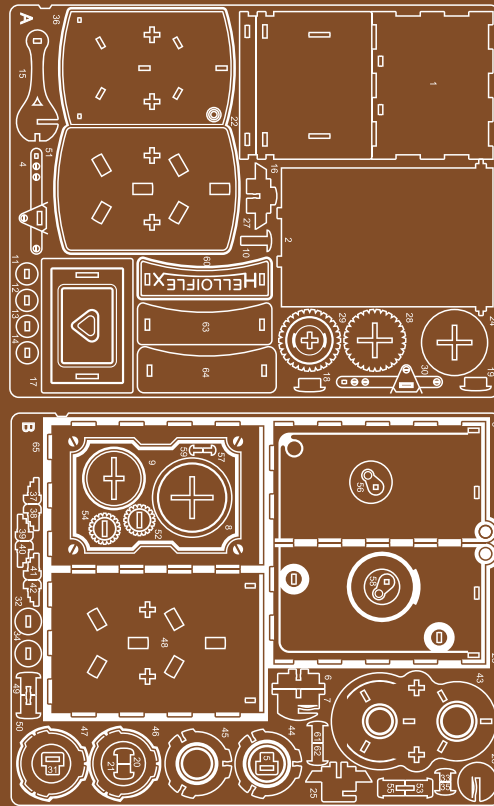


VINTAGE CAMERA

BUILDING INSTRUCTIONS



Manufactured in Shaoguan, China 096082018

READ BEFORE ASSEMBLING:

- Go through the instructions one step at a time.
- Don't punch out all of the precut parts at once.
- Plywood thickness and color may vary.
- While not necessary, glue may be applied if desired.
- If you have trouble punching out the small pieces from the board, use tweezers or a toothpick to help.
- Adult supervision recommended.

WARNING: CHOKING HAZARD - CONTAINS SMALL PARTS. NOT FOR CHILDREN UNDER 3 YRS.

Incredibuilds™ Copyright © Insight Editions, LP, 2018

MAKE IT YOUR OWN

Before you start building and decorating your model, read through the instructions so you understand how it all comes together. Then make a plan—antique or abstract? What about a checkered camera? The choice is yours! Here is an example of a vintage camera replica to get those creative juices flowing.

PLAN

For this project, you'll want to paint the camera while partially disassembled. Remove all the knobs, rings, and other silver pieces shown in the image here.

COLOR

Paint your entire model solid black. Then, mix together a little white with black to create a color that's only slightly lighter than your black base. Use this new dark gray with a dry brush or sponge to lightly dab the outsides of the camera. Next, paint the silver details while paying careful attention to whether the piece should have a silver edge or a black edge.



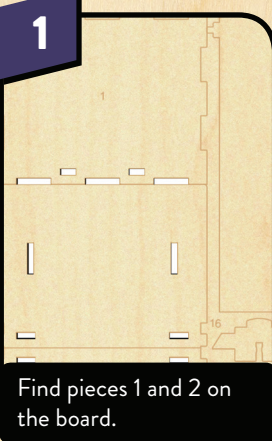
TECHNIQUE

Grab a large brush for the base coat of the model, but try using a very dry brush or sponge to create a faux leather appearance around the edges of the camera.

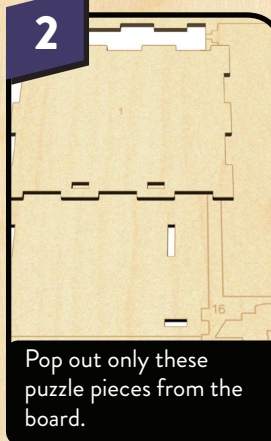
Painting the glass lenses of the camera can be tricky, but you can create a surface that looks like it's reflecting the environment around it: Start by painting a dark horizontal stripe in the center of the circle. Then, paint the bottom half of the lens brighter to reflect a well-lit surface. The light should fade as it meets the horizontal line, and the top of the lens should be generally dark with a few bright spots to depict overhead lights.



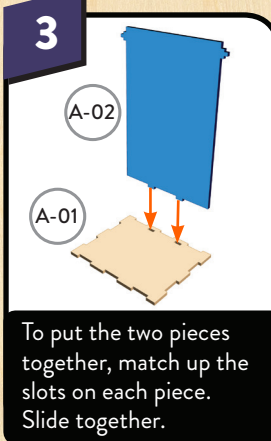
1



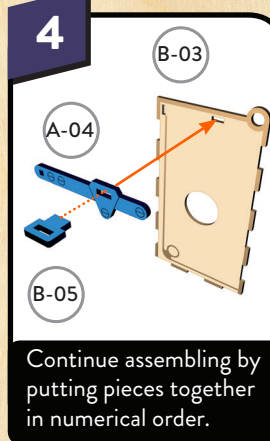
2



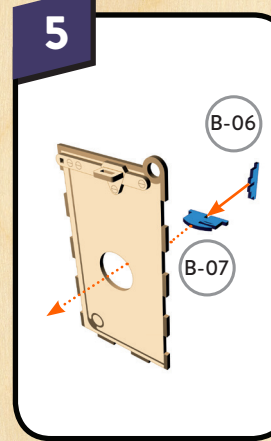
3



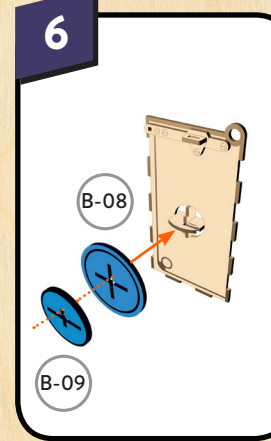
4



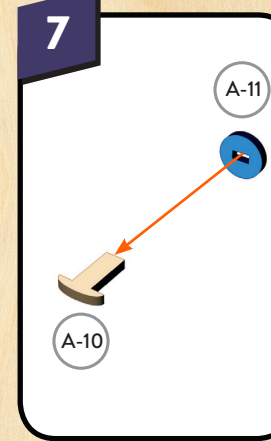
5



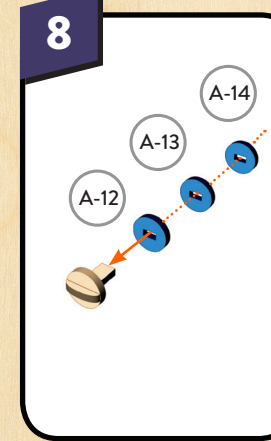
6



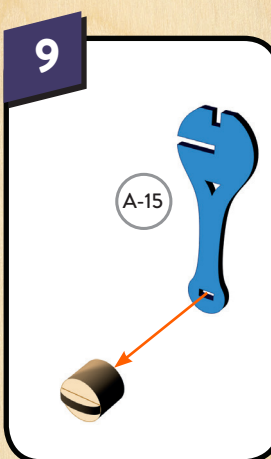
7



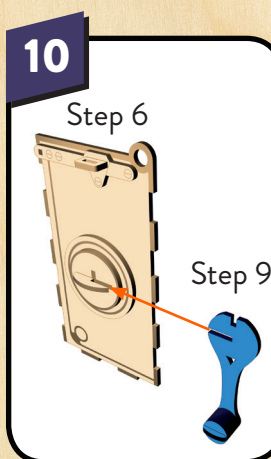
8



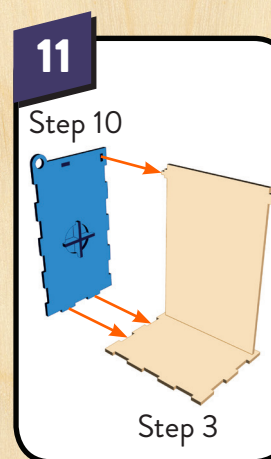
9



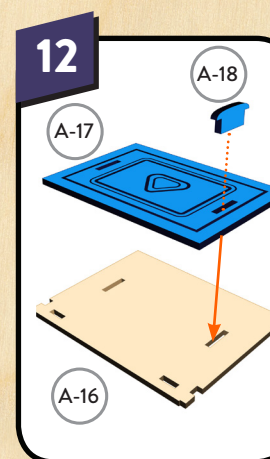
10



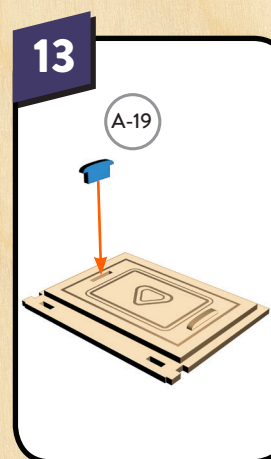
11



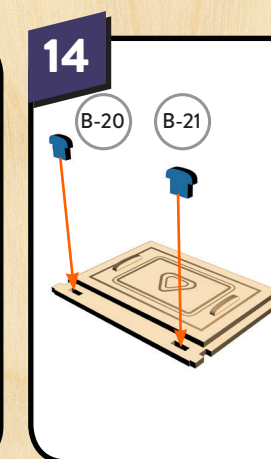
12



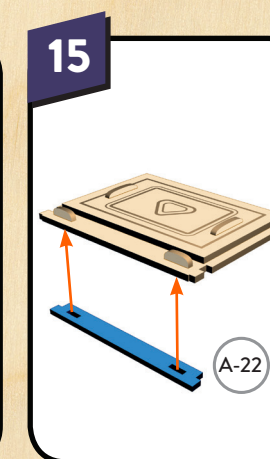
13



14



15



16

